



LOCKE & ENGLAND

AUCTIONEERS & VALUERS

JULY SALE OF
Antique Furniture & Collectors' items
Jewellery & Watches

VIEWING

Antique Furniture & Collectors' items,

Saturday 23rd July – 10am - 2pm

Tuesday 26th July – 9am - 5pm

Wednesday 27th July – 9am - 7pm,

Morning of sale from 9am - 11am

AUCTION

Antique Furniture & Collectors' items,

Thursday 28th July 2022

Commencing at 11.00am

LIVE INTERNET BIDDING



CATALOGUES

£5 by post, online at

www.leauction.co.uk

HAMMER PRICES - MAY 2022

1	£1100	33	£45	68	£150	101	£1000	179	£30	317	£50	369	£120
2	£320	34	£150	69	£55	102	£80	180	£50	318	£850	401	£150
3	£190	35	£110	70	£65	104	£320	181	£50	319	£700	402	£140
4	£1200	36	£850	71	£75	105	£320	182	£100	321	£80	403	£750
5	£75	37	£440	72	£50	106	£2900	183	£110	322	£320	404	£680
6	£180	38	£300	73	£200	108	£150	184	£100	323	£240	405	£300
7	£80	39	£120	74	£100	109	£95	185	£50	324	£300	406	£170
8	£180	40	£440	75	£150	110	£65	186	£50	325	£260	407	£260
9	£500	41	£240	76	£90	111	£400	187	£100	326	£30	408	£130
10	£480	42	£400	77	£160	150	£50	188	£22	327	£100	409	£70
11	£20	43	£160	78	£750	152	£130	189	£120	328	£90	410	£170
12	£100	44	£280	79	£250	153	£100	200	£320	329	£100	411	£55
13	£850	45	£120	80	£55	154	£130	201	£300	330	£9500	412	£120
14	£65	46	£200	81	£80	155	£280	202	£90	331	£120	413	£200
15	£100	47	£100	82	£50	157	£100	203	£180	332	£50	414	£100
16	£220	48	£100	83	£50	158	£100	204	£60	333	£54	415	£125
17	£120	49	£85	84	£600	159	£150	205	£30	334	£160	416	£180
18	£40	50	£30	85	£260	160	£20	207	£40	335	£65	417	£80
19	£110	53	£100	86	£30	162	£90	302	£200	336	£130	418	£150
20	£250	54	£80	87	£100	164	£200	303	£750	337	£130	419	£35
21	£95	55	£30	88	£300	165	£190	304	£140	338	£110	420	£65
22	£240	56	£170	89	£1800	166	£140	305	£30	339	£160	421	£270
23	£1200	57	£80	90	£70	167	£30	306	£60	340	£50	422	£310
24	£55	58	£80	91	£120	168	£50	307	£180	341	£130	423	£250
25	£50	60	£80	92	£240	169	£80	308	£300	342	£130	424	£320
26	£80	61	£1000	93	£700	170	£50	309	£80	360	£120	425	£330
27	£200	62	£180	94	£60	171	£75	310	£130	361	£80		
28	£160	63	£65	95	£75	172	£150	311	£100	362	£70		
29	£65	64	£190	96	£60	174	£300	313	£200	363	£70		
30	£40	65	£200	97	£14	176	£50	314	£180	364	£100		
31	£100	66	£55	98	£40	177	£26	315	£200	365	£100		
32	£45	67	£190	99	£200	178	£80	316	£650	366	£140		

Furniture and Clocks



SPECIALIST VALUATIONS DAYS 2022

Tuesday 26th July 10am - 4pm

Wednesday 24th August 10am - 4pm

Tuesday 27th September 10am - 4pm

If you have any items of a more general nature please feel free to visit our salerooms on Friday or Monday of any week (except Bank Holidays) where we will be able to accept entries for our weekly sales

Alternatively, you may prefer to email us an image of items by simply contacting info@leauction.co.uk. It is also possible to arrange a house visit by one of our specialists

Furniture and Clocks



Lot 1

1
An early 18th century and later walnut chest on chest, the cavetto cornice over two short and three long drawers above the brushing slide and three drawers, the lower with recessed sunburst on bracket feet, h. 172 cm, w. 76 cm, d. 51 cm
£300 - £500

2
A late 17th century oak coffer, the three panel top lifting to reveal a vacant interior over the two panel front with split turnings, h. 71 cm, w. 127 cm, d. 62 cm
£200 - £300



Lot 2



5
An 18th century style oak 'wake' or dining table, the oval drop leaf top supported on double gate action above turned legs united by stretchers, h. 76 cm, l. 232 cm, w. 154 cm
£100 - £200

3
An 18th century oak settle, the four panel back over the lift up seat on a four panel front, with upholstered pad seat, h. 99 cm, w. 133 cm, d. 53 cm
£200 - £300

4
An 18th century oak side/child's table, the moulded top over a single drawer on turned legs, h. 65 cm, w. 74 cm, d. 56 cm
£150 - £250



Lot 3



Lot 6

6
An 18th century oak and banded bachelor's chest, the fold over top over one long, two short and two long drawers on bracket feet, h. 76 cm, w. 77 cm, d. 35 cm
£200 - £300

7
An 18th century and later oak coffer, the three panel top over a three panel front, h. 54 cm, w. 113 cm, d. 42 cm
£60 - £80

8
An 18th century oak bureau, the fall front over four long drawers on bracket feet, h. 111 cm, w. 105 cm, d. 53 cm
£50 - £80



Lot 9

9
An 18th century probably Dutch Burgomeister chair with caned back panels, caned seat and red upholstery pad seat, h. 85 cm, w. 75 cm
£150 - £250



10
A 18th century Dutch walnut and marquetry crib, the pleated silk lined swing basket on turned supports, h. 60 cm, w. 90 cm, d. 43 cm
£80 - £120



Lot 12

11
A mid 18th century oak chest of two short over three long drawers, h. 91 cm, w. 95 cm, d. 52 cm
£80 - £120

12
Two possible 16th century carved oak panels depicting figures set within a 19th century Irish oak hall stand, h. 204 cm, w. 100 cm, d. 34 cm
£250 - £350

13
A set of six late 19th century carved oak framed dining chairs with red patterned upholstery on turned front legs, h. 85 cm, w. 50 cm, d. 51 cm
£70 - £100

Lot 14

14
A 19th century walnut Continental jardinière stand, the circular top with carved edge over the putto column on three carved scroll legs, h. 126 cm, dia. 48 cm
£100 - £200

15
A handwoven Afghan rug, the multi line border enclosing an orange ground field with two rows of octagons, 202 cm x 109 cm
£60 - £100

16
An early 19th century rosewood worktable attributed to Gillows, the ratcheted top with leather insert over two drawers and work box flanked by drop leaf's with drawers on turned and reeded legs terminating in brass cup castors, h. 73 cm, w. 71 cm, d. 43 cm
£400 - £600



Lot 17

17
A Victorian mahogany nursing chair upholstered in a pink button back fabric, the moulded frame over the serpentine seat on turned front legs, h. 93 cm, w. 66 cm, d. 83 cm
£100 - £150

18
An 18th century mahogany chest on chest, the dental cornice over two short and three long drawers on the base with three drawers on bracket feet, with original handles, h. 188 cm, w. 113 cm, d. 54 cm
£200 - £300

Lot 18



19

An early 19th century Continental giltwood display cabinet, the cornice with scrolling foliate entablature over two glazed doors enclosing later fixed shelving and a yellow water silk lined interior on the base with putto supports, h. 181 cm, w. 131 cm, d. 50 cm

£500 - £800

20

A pair of 19th century baroque giltwood door tops, h. 80 cm, w. 109 cm

£100 - £200

21

A 19th century copper log bin with riveted body, h. 32 cm, dia. 36 cm

£50 - £80

22

A 19th century French chestnut log bin, the serpentine edge top lifting to reveal a lined interior over carved panel front and brass carry handles on plinth base, h. 49 cm, 56 cm, d. 48 cm

£80 - £120



Lot 19



Lot 20



Lot 23

23

An Italian walnut X-frame armchair, the back support with carved mask finials over slatted feet, h. 85 cm w. 59 cm d. 50 cm

£50 - £80

24

A Victorian mahogany extending dining table, the moulded top on pull-out mechanism with three leaf's over turned and carved legs with twin wheel brass castors, h. 72 cm, max length, 273.5 cm, min length, 106 cm, w. 152 cm

£200 - £300

25

A Victorian walnut framed nursing chair upholstered in a cut mushroom fabric, the carved top rail over the serpentine seat on carved cabriole legs, h. 95 cm, w. 65 cm, d. 83 cm

£80 - £120

26

A mid 18th century mahogany bureau, the fall front with fitted interior over four long drawers on bracket feet, h. 94 cm, w. 73 cm, d. 42 cm

£80 - £120

27

An early 20th century walnut 'Globe Wernicke' four section bookcase with leaded glass doors, h. 132 cm, w. 86 cm, d. 27 cm

£150 - £250



Lot 29

28

A handwoven Persian runner, the triple line border surrounding the red ground field with floral motif's, 250 cm x 80 cm

£80 - £120

29

A late Victorian walnut, marquetry, boxwood strung and gilt brass mounted credenza, the central glazed door flanked by corinthian columns and bow glazed doors on ebonized turned feet, h. 110 cm, w. 153 cm, d. 45 cm

£200 - £300

30

An 18th century and later mahogany D-end dining table, the two D-ends incorporating a drop leaf table to center, on brass castors, h. 74 cm, max l. 285 cm, w. 120

£70 - £100

31

A set of ten (2+8) early 20th century walnut dining chairs in the 18th century style, the carved and pierced top and back rails over the serpentine pad seat on chamfered square section legs, h. 99 cm, w. 58 cm, d. 59 cm

£100 - £200



Lot 36

32

A late 18th century mahogany bureau bookcase, the dentil cornice over two astragal glazed doors enclosing two adjustable shelves over the fall front with fitted interior above two short drawers and two cupboard doors with dummy drawers to front enclosing slides on ogee bracket feet, h. 205 cm, w. 128 cm, d. 60 cm
£100 - £200

33

A late 18th century mahogany chest of two short over three long drawers, the caddy top over the cottage cut carcass on later bracket feet, h. 99 cm, w. 91 cm, d. 47 cm
£80 - £120

34

An early 20th century mahogany three fold screen, glazed panels above fielded blind panels, h. 152 cm, max length 165 cm
£50 - £80

35

A mid 18th century walnut bureau bookcase, the cavetto cornice over two astragal glazed doors above the fall front revealing fitted interior with secret drawers, over one long, two short and two long drawers, h. 201 cm, w. 99 cm, d. 55 cm
£100 - £200

36

An Edwardian mahogany and painted toilet mirror, the shield plate surrounded by floral and swag painted frame flanked by painted oval paneled doors below silk lined trinket boxes on ogee bracket feet, h. 100 cm, w. 83 cm, d. 25 cm
£100 - £150

37

An Edwardian burr walnut oval table top on an early 19th century mahogany base with four reeded legs, h. 71 cm, w. 143 cm, d. 102 cm
£80 - £120

38

A late 18th/early 19th century mahogany and satinwood banded card table, the fold over top supported on a double gate action on square section tapering legs on spade feet, h. 74 cm, w. 97 cm, d. 47 cm
£50 - £80



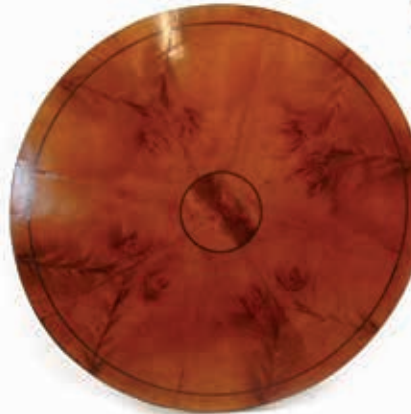
Lot 37

39

A mid 18th century mahogany tripod table, The one piece dish tilt top over the turned column and three legs, h. 66 cm, dia. 56 cm
£80 - £120

40

An early 19th century French Empire possibly pear wood chest of four long drawers, the drawers with ormolu handles and escutcheons with classical mask back plates on a plinth base, h. 88 cm, w. 111 cm, d. 58 cm
£150 - £250



Lot 41 (top)



Lot 43

41

An 18th century satinwood and inlaid gueridon/occasional table, the circular top over three C-scroll legs united by an under tier with a floral marquetry patera, h. 71 cm, dia. 65 cm
£100 - £200

42

A set of six Victorian mahogany dining chairs, the moulded backs over the serpentine seat upholstered in a cut pink fabric on turned front legs, h. 91 cm, w. 50 cm, d. 50 cm
£80 - £120

43

An early Victorian mahogany breakfast table, the circular book matched veneered tilt top over the octagonal section column and circular platform base on three C-scroll feet, h. 71 cm, dia. 121 cm
£100 - £150



Lot 40



Lot 44

46
A Regency rosewood open arm chair upholstered in a buttoned beige fabric, the moulded frame on reeded front legs, h. 105 cm, w. 60 cm, d. 93 cm
£150 - £250

47
An 18th century mahogany and oak banded work table, the top lifting to reveal a silk lined interior on the turned column and three legs, h. 74 cm, w. 48 cm, d. 38 cm
£80 - £120



Lot 48

48
A Regency mahogany, boxwood strung and rosewood banded toilet mirror, the oval plate over the serpentine base with three trinket drawers, h. 60 cm, w. 42 cm, d. 20
£40 - £60

49
A 19th century wrought iron and copper adjustable standard lamp converted to electricity, max h.189 cm
£40 - £60

50
A set of six Victorian mahogany dining chairs, the carved back rail over the black oil skin upholstered seat on turned front legs, h. 87 cm, w. 47 cm, d. 54 cm
£70 - £100

44
An 18th century mahogany chest of four long drawers, the top over brushing slide on bracket feet, h. 84 cm, w. 90 cm, d. 50 cm
£120 - £180

45
A Victorian rosewood two tier whatnot with turned supports over single drawer, h. 69 cm, w. 61, d. 42 cm
£50 - £80



Lot 46

51
An art nouveau brass framed triple vanity mirror, the three beveled oval plates with etched design, h. 80 cm, w. 88 cm
£80 - £120



Lot 51



Lot 52

52
A 19th century style mahogany and birch wellington chest, the carved edged top over seven drawers on plinth base, h. 133 cm, w. 60 cm, d. 50 cm
£200 - £300

53
An Edwardian mahogany, boxwood strung and marquetry cylindrical vitrine, with single door on swept legs, h. 94 cm, dia. 52 cm
£80 - £120

54
An Edwardian mahogany, rosewood banded and boxwood strung side cabinet, the top with two glazed doors enclosing a single adjustable shelf over the single drawer table base, h. 144 cm, w. 51 cm, d. 34 cm
£70 - £100

55
A 19th century style French kingwood and floral marquetry drinks cabinet. Two serpentine fronted cupboard doors enclosing mirrored interior over single drawer and two cupboard doors on cabriole feet. h.130 cm w.78 cm d.40 cm
£100 - £200





Lot 56

58

A 19th century walnut and gilt brass mounted display cabinet, the serpentine top over the single glazed door over the cupboard doors with ceramic panels of courting couples, h. 105 cm, w. 50 cm, d. 35 cm *£150 - £250*



Lot 59



56

A 19th century French burr walnut boxwood strung and brass mounted chest of drawers. The superstructure with two shelves over the serpentine chest of three drawers with porcelain handle backs on cabriole legs. h. 116 cm w. 42 cm d. 29 cm *£120 - £180*

57

An early 19th century giltwood mirror, the top with putto and birds amidst foliage and scrolls over the oval beveled plate, h. 133 cm, w. 90 cm *£200 - £300*

59

A pair of 19th century style French kingwood, brass mounted and marquetry bedside tables, the marble tops with serpentine edges over three drawers on cabriole legs, h. 73 cm, w. 35 cm, d. 30 cm *£100 - £200*



60

A 19th century French rosewood, marquetry and gilt brass mounted side cabinet, the galleried top with central serpentine cupboard door flanked by open shelves over the base with single drawer on cabriole legs, h. 133 cm, w. 82 cm, d. 50 *£400 - £600*

61

An Edwardian rosewood, boxwood strung and marquetry floorstanding corner display cabinet, the galleried top over the bow glazed door, beveled mirrors and the base with under tier, h. 179 cm, w. 71 cm *£80 - £120*



Lot 62

62

An early 20th century satinwood and other display cabinet on stand, the single glazed door on square section tapering legs, h. 112 cm, w. 49 cm, d. 43 cm *£80 - £120*

63

A Victorian rosewood games/work table, the fold over top with inlaid chess and backgammon board over single drawer and workbox, h. 73 cm, w. 51 cm, d. 36 cm *£70 - £100*



Lot 63



Lot 64

69
An Edwardian mahogany, rosewood banded and marquetry demi-lune card table, the top supported on a double gate action on square section tapering supports, h. 72 cm, w. 96 cm, d. 44 cm
£70 - £100

70
A pair of Victorian walnut nursing chairs upholstered in a pink button back fabric, the serpentine seat on carved cabriole legs, h. 83 cm, w. 68 cm, d. 82 cm
£100 - £200

Lot 66



64
A 19th century French mahogany and brass mounted vitrine table, the heart shaped glazed top on cabriole legs, h. 82 cm, w. 43 cm, d. 51 cm
£100 - £150

65
A late 19th century gilt brass standard lamp converted from an oil lamp, with cherub design, h. 180 cm
£100 - £200

66
A 19th century French lamp on column, the spelter cherubs on the ebonized and carved column, h. 178 cm
£100 - £150

67
An early 19th century mahogany breakfast table, the rectangular tilt top on turned column and four reeded legs, h. 72 cm, w. 124 cm, d. 95 cm
£60 - £100

68
An Edwardian mahogany, boxwood strung, satinwood banded and marquetry display cabinet, the pediment over the glazed central door flanked by beveled plates over marquetry panel doors on cabriole legs, h. 214 cm, w. 116 cm, d. 40 cm
£100 - £200



Lot 65



Lot 73 (detail)

71
A Regency and later rosewood and boxwood strung bookcase, the later top over two glazed doors enclosing two adjustable doors on brass paw feet, h. 91 cm, w. 96 cm, d. 31 cm
£80 - £120

72
A handwoven Persian rug, the multi line border surrounding a red ground field with three superimposed central medallions, 300 cm x 154 cm
£100 - £200

73
A handwoven possibly silk Persian rug, the three line border surrounding the blue ground field with arabesques, 157 cm x 110 cm
£80 - £120



Lot 74

74
An early 19th century mahogany work table. the top over single drawers and work box on bow support and platform base with four scroll feet, h. 72 cm, w. 62 cm, d. 46 cm
£80 - £120

75
An 18th century mahogany and marquetry secretaire book case, the dome cornice over two astragal glazed doors over the secretaire drawer and three further drawers on later plinth base, h. 235 cm, w. 128 cm, d. 47 cm
£300 - £500

Lot 75





Lot 76

78

A 19th century French giltwood toilet mirror, the circular plate on foliate scroll supports above the serpentine base with trinket drawer, h. 70 cm, w. 61 cm, d. 30 cm £80 - £120



Lot 79

79

A pair of early 20th century giltwood pier mirrors, the pineapple finial over foliate glass panels and rectangular plate flanked by fluted columns, h. 111 cm, w. 41 cm £100 - £200

80

A late Georgian mahogany, banded and marquetry tea caddy, the top lifting to reveal two compartments, h. 11.5 cm, w. 22 cm, d. 12 cm £50 - £80



Lot 77

76

An early 20th century, 18th century style chinoiserie cabinet on stand, the gold lacquered cabinet with temple scenes opening to reveal the gold interior with single glass shelf and brushing slide on the gilt wood base with mask frieze, h. 168 cm, w. 102 cm, d. 53 cm £300 - £500

77

A 19th century gilt wood foot stool, the pad seat upholstered in a light blue silk, h. 14 cm, w. 109 cm, d. 30 cm £80 - £120

81

A pair of 19th century walnut and ebony banded table chests, the top over three drawers on bracket feet, h. 33 cm, w. 29 cm, d. 21 cm £70 - £100



Lot 81

82

A 19th century walnut and parquetry banded vanity box, the top lifting to reveal a velvet lined fitted interior with manicure set and bottles over side drawer, h. 16.5 cm, w. 31 cm, d. 23 cm £100 - £150

83

A 19th century rosewood miniature display/collectors cabinet, the glazed door enclosing a fixed shelf over three drawers on plinth base, h. 48 cm, w. 28 cm, d. 17 cm £60 - £80

84

A 19th century burr walnut ladies travelling desk with brass carry handles. No key so interior unknown, h. 28 cm, w. 43 cm, d. 23 cm £150 - £250



Lot 85

85

A 19th century satinwood, marquetry and wood mosaic book trough, the flaps with bird and butterfly design over the single drawer on paw feet, h. 30 cm, w. 52 cm, d. 34 cm £150 - £250

86

A 19th century coromandel desk set comprising of ink well, blotter, book trough and stationary box, with brass mounts and ceramic roundels £200 - £300



Lot 86

87

An early 19th century tortoise shell box, the top lifting to reveal a lined vacant interior with serpentine front and white metal escutcheon, h. 9.5 cm, w. 11 cm, d. 8 cm



Lot 87

£80 - £120

88

A handwoven Turkish rug, the three line border surrounding a cream ground field with geometric design, 152 cm x 92 cm

£50 - £80

89

A set of seven (6+1) late 18th century mahogany dining chairs, the top rail over three back rails with leaf finials above the needlework up holstered seat on moulded tapering legs united by stretchers, h. 93 cm, w. 62 cm, d. 56 cm

£100 - £150

90

An Edwardian rosewood and marquetry envelope card table, the four segment top over a single drawer on square section tapering legs with under tier, h. 75 cm, w. 56 cm, d. 56 cm

£100 - £200

91

A reproduction early 19th century style satinwood library table, the serpentine top over two book troughs, h. 72 cm, w. 62 cm, d. 36 cm

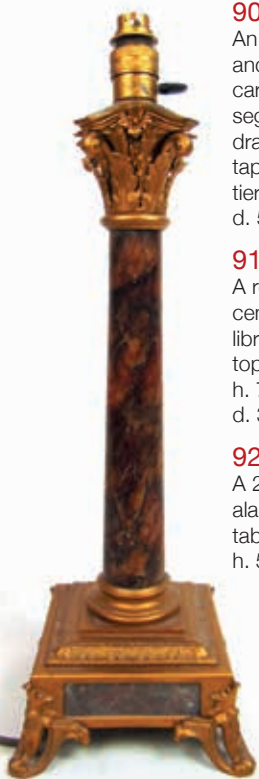
£100 - £150

92

A 20th century possibly alabaster Corinthian column table lamp with shade, h. 53 cm

£40 - £60

Lot 92



93

A handwoven Turkish rug, the multi line border surrounding a peach ground field with geometric design, 215 cm x 145 cm

£80 - £120

94

A late 18th century mahogany breakfront wardrobe, the cornice over two cupboard doors enclosing slides and drawers and two short and two long drawers flanked by two cupboard doors with hanging space and drawers, h. 208 cm, w. 212 cm, d. 64 cm

£200 - £300



95

A pair of early 20th century purple marble and gilt brass mounted lamps, the columns with green man mask and swags, h. 75 cm

£150 - £250



96

An early 20th century satinwood dressing table with machine turned and blue glass silver hallmarked dressing set, Birmingham 1927, h. 88 cm, w. 73 cm, d. 47 cm

£300 - £500

97

An early 20th century mahogany, marquetry and boxwood strung pier mirror, the panel depicting a goat on mountain over the rectangular plate, h. 152 cm, w. 56 cm

£50 - £80

98

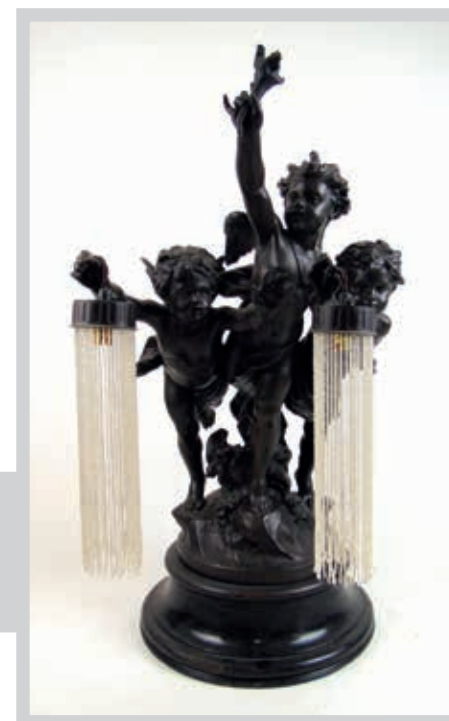
An early 20th century giltwood mirror with fleur de lys to top over the beveled plate and the frame with swags and flowers, h. 107 cm, w. 53 cm

£50 - £80

99

An early 20th century French spelter lamp in the form of three cupids holding lights on a turned and ebonized base, h. 67 cm

£100 - £200



100

A modern glass metal mounted and marble table lamp, 83 cm

£50 - £80

101

A pair of Venetian florally etched mirrors with three branch candle holders, h. 47 cm, w. 28 cm

£70 - £100

102

A pair of Venetian style mirrors with lady and gentleman etched design and two branch candle holders, h. 41 cm, w. 26 cm

£60 - £80

103

A modern Westminster chime mantle clock by Bracher & Sydenham of Reading £50 - £80



Lot 104

104

A late 19th century slate and brass mounted chinoiserie mantle clock, the movement by Japy Freres & Co., No.1098, h. 45 cm £100 - £200

105

A 19th century French bronze and marble mantle clock, the figure of a man feeding a child next to the face with Arabic numerals on a stepped base, h. 56 cm £100 - £200



106

A 19th century French gilt brass and alabaster clock garniture with cupid design, h. 53 cm £150 - £250

107

A late 19th century French gilt metal and ceramic panel mantle clock, two cupids over the face with Roman numerals, under a glass dome, h. 49 cm £150 - £250

108

A Georgian mahogany and rosewood banded bow front corner cupboard, h. 103 cm, w. 72 cm £50 - £80

109 - 149

Spare Lots



Lot 106



Lot 107

ENTRIES NOW INVITED

For our next specialist auction of Antiques and Collectable's at the Leamington Spa Auction Centre

Recent Highlights



Hammer Price £1,200



Hammer Price £9,500

Terms used in this catalogue have the following meanings.

Please note that all statements in this catalogue, regarding authorship, attribution, origin, date, age, provenance and condition are statements of opinion and are not treated as a statement of fact.

- 1. A N ARTIST**
In our opinion, the work is by the artist.
- 2. ATTRIBUTED TO A N ARTIST**
In our opinion, the work is of the period of the artist which may be whole or in part the work of the artist.
- 3. STUDIO, (CIRCLE OR WORKSHOP) OF A N ARTIST**
In our opinion, the work is of the period and closely relates to his style.
- 4. SCHOOL OF A N ARTIST**
In our opinion, the work is by a pupil or a follower of the artist.
- 5. MANNER OF A N ARTIST**
In our opinion, the work is in the style of the artist and is of a later period.
- 6. AFTER A N ARTIST**
In our opinion, this work is a copy of the artist.
- 7. ASCRIBED TO A N ARTIST**
In our opinion, this work is not by the artist, however, previous scholarship has noted this to be a work by the artist.
- 8. SIGNED (OR DATED)**
The work has a signature (or date) which in our opinion is genuine.
- 9. BEARS SIGNATURE (OR DATE)**
The work has a signature (or date) which in our opinion is not authentic.

Pictures & Prints



Pictures and Maps

150

Naomi Frears (British, contemporary)
'Mad About The Boy'
signed
acrylic on paper
28 cm x 29 cm £100 - £200



Lot 153

151

English, 20th century school
huntsman returning home with hounds
oil on canvas
unsigned
24 cm x 34 cm £50 - £80

152

attributed to Adriaen van Diest
(Dutch 1655-1704)
hunting dogs chasing a rabbit with
castle in background
oil on canvas
unsigned
70 cm x 135 cm £1500 - 2500

153

Scottish school,
18th century, a portrait of a gentleman,
oil on canvas,
unsigned,
71 cm x 91 cm label verso £200 - £300



Lot 152



Lot 154

154

in the manner of Charles Cattermole
(1832-1900)
a craftsman inspecting wares,
watercolour,
unsigned,
84 cm x 68 cm £100 - £200

155

After J. Gould and H.C Richter
(British 19th century),
hummingbirds on flowers,
coloured lithographs,
51 cm x 67 cm (3) £150 - £250

156

attributed to Jacob Thompson
(British, 1806-1879),
a portrait of George Stephenson,
oil on canvas,
unsigned,
56 cm x 65 cm, text verso £300 - £500



Lot 156



Lot 160

157

Jorge Aquilar-Agon (b.1936 Spanish)
 harbor by city scene
 oil on canvas
 signed
 90 cm x 44 cm

£50 - £80

158

Jorge Aquilar-Agon (b.1936 Spanish)
 boats by harbor
 oil on canvas
 signed
 100 cm x 44 cm

£50 - £80

159

attributed to Lady Murray
 doorway on Lago di Como
 oil unsigned,
 label verso
 22 cm x 35 cm

£80 - £120

160

attributed to Carl Suhrlandt (1829-1919)
 figures by hay wain
 oil on canvas
 unsigned
 75 cm x 49 cm

£500 - £800

161

20th century continental school
 17th century gentlemen smoking and drinking
 oil on board
 unsigned
 16 cm x 20 cm

£80 - £120

162

Edvard Munch (1863-1944, Norwegian)
 two heads
 lithograph
 signed
 62 cm x 46 cm

£100 - £200

163

Jean Michel Lengrand (b.1955, French)
 'King Solomon'
 oil on board
 signed and dated 1983,
 with certificate of authenticity from Pieter
 Breughel
 140 cm x 100 cm

£400 - £600



Lot 162



Lot 163



Lot 164

164

Jean Michel Lengrand (b.1955, French)
 'The Queen of Sheba'
 oil on board
 signed and dated 1984,
 with certificate of authenticity from Pieter
 Breughel
 140 cm x 100 cm

£400 - £600

165

Jean Michel Lengrand (b.1955, French)
 'The Sphinx'
 oil on board
 signed and dated 1983
 151 cm x 92 cm

£400 - £600

166

after Charles Crombie
 'Rules of Golf' x 24 prints in folder
 43 cm x 28.5 cm

£250 - £350



167

after Adolfo Menzel (1815-1905)
 a set of 27 military uniform prints,
 along with information on the artist
 £200 - £300

168 - 169

Spare Lots

170

Three county maps, Suffolk, Virtue & Co.
 c.1868, Oxfordshire, c.1840, and Shropshire,
 Pigot & Co. 1839

£50 - £80

171

after Eman Bowen (1694-1767) map of
 Bermudas and St Christopher (vulgarly called St
 Kits) hand coloured engraving 44.5 cm x 40 cm

£80 - £120



Lot 171

172

late 17th /early 18th century, possibly Ogilby
 map of Barmudas engraving 36 cm, x 29 cm
 (image only)

£100 - £200



*Ceramics & Glass and
Works of Art*



Lot 174

173

Thirteen county maps of Wales
by J Archer £100 - £150



174

Plan de la ville Citte et universite
et Fauxbourgs de Paris
£100 - £150

175 - 199

Spare Lots



Ceramics & Glass and Works of Art

200

A pair of early 20th century continental ceramic posy holders under glass domes, h. 42 cm *£60 - £80*



201

A large pair of 19th century Meissen style porcelain figures of a lady and gentleman in 18th century dress. Marked to base, h. 49 cm *£400 - £600*

202

A pair of late 19th/early 20th century Dresden style porcelain figural groups of couples with animals, instruments etc. h. 30 cm *£100 - £200*



Lot 203

203

Two 19th century Meissen porcelain models of birds defending their nests, h. 22 cm *£150 - £250*

204

A 19th century Meissen style porcelain wall mirror having encrusted floral and putti decoration and an ebonized shelf, h. 68 cm, w. 35 cm, d. 20 cm *£150 - £250*

205

A late 19th/early 20th century continental porcelain wall mirror, the beveled plate adorned with floral swags and winged putti, l. 46 cm *£50 - £80*

206

A late 19th/early 20th century continental porcelain wall mirror with encrusted floral and cherub decoration, the top with ladies head, l. 56 cm *£80 - £120*

207

An early 20th century French porcelain vase or planter with painted garden scenes and applied putti. Marked 'Londe Limoges' to base, h. 24 cm *£40 - £60*

208

A collection of late 19th/early 20th century continental porcelain to include a comport, hand mirror, wall shelves, figures etc. *£150 - £250*



209

A pair of 19th century Meissen style porcelain figures of a lady and gentleman in 18th century dress, h. 49 cm *£300 - £500*

210

A large Moorcroft table lamp decorated in the Foxglove pattern on a dark green ground, h. 64 cm *£80 - £120*

211

A pair of cut glass and gilt metal three branch candelabra with lusters, h. 46 cm A/F *£80 - £120*



Lot 204



212

A pair of Royal Worcester Hadley style figural candelabra modelled as a country gentleman with scythe and a lady with barrel. Date code for 1884, h. 56 cm *£200 - £300*

213

A large pair of 20th century Chinese blue and white globular vases decorated with auspicious objects , h. 63 cm
£300 - £500



Lot 219

214

A Royal Worcester posy vase in the form of a dove with urn. Date mark for 1867, h. 15 cm
£30 - £50

215

A collection of small Royal Worcester Blush Ivory ceramicware to include a cream boat, miniature cups, saucer etc. h. 7 cm
£30 - £50

216

A collection of Royal Worcester candle snuffers to include monks, nun, Punch, Baby etc.
£100 - £150

217

A collection of Royal Worcester candle snuffers to include Mandarin, monks, Japanese Girl, bell etc.
£100 - £150

218

A Royal Worcester figure of a fisherman, modelled by James Hadley. Date mark for 1892, impressed '1202' to base, h. 20 cm
£80 - £120



Lot 213

219

An Art Deco Crown Devon Fielding's Mattajade Fairy Castle pattern vase, h. 15 cm
£80 - £120

220

A 20th century Meissen style four piece monkey band, h. 18 cm
£80 - £120

221

A R. Lalique Dahlias pattern plaffonier, marked 'R. LALIQUE' to interior, dia. 30.5 cm
£300 - £500

222

A later 20th century Orrefors art glass bowl decorated in a brown and yellow leaf design. Engraved 'Orrefors Craal No.233-70 Jan Johansson' to base, dia. 22 cm
£100 - £200



Lot 220



Lot 223

223

A large 19th century Sunderland lustre bowl decorated with the fables of Aesop, dia. 31 cm
£150 - £200

226

A Limoges porcelain casket with painted floral decoration and ormolu mounts, l. 22 cm
£80 - £120



Lot 226

224

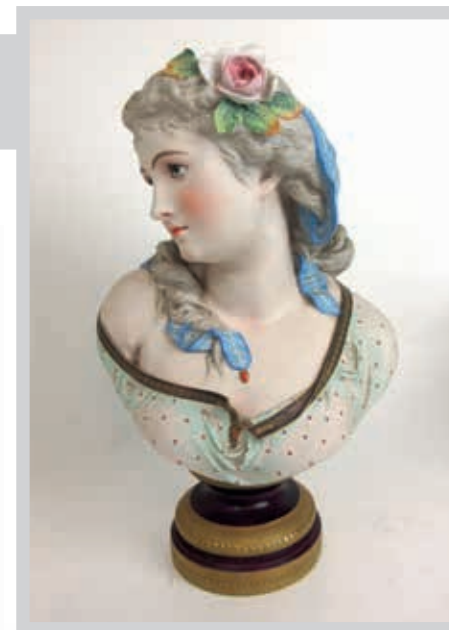
After A.Carrier A French bisque porcelain bust of a young maiden, h. 37 cm
£100 - £200

225

A 20th century Meissen style twin ice bucket or vase, the body with putti decoration, h. 20 cm
£40 - £60



Lot 221 (part)





Lot 227

227

A large Limoges porcelain casket decorated with an 18th century scene and still life on a dark blue ground, l. 34 cm *£150 - £200*

228

A collection of eight late 19th/early 20th century Sitzendorf and other continental porcelain figures to include artists, sculptor, soldier etc. *£80 - £120*



229

A Limoges blue ground and gilt occasional/tea table, the top with cherub design, h. 61 cm, dia. 36 cm *£150 - £250*

230

A Von Schierholz occasional/tea table, the top with rose decoration over the column and three legs, h. 69 cm, dia. 47.5 cm *£150 - £250*

231

A large 19th century French ceramic and gilt metal urn on stand, the florally painted panels signed Francoise, h. 109 cm *£150 - £250*



232

A pair of late 19th century Meissen style porcelain busts of children, h. 22 cm *£100 - £200*

233

A 19th century porcelain model of a cornucopia supported by putti, h. 16 cm *£40 - £60*

234

A 19th century Sampson porcelain pot bearing Sotheby's labels, h. 9.5 cm *£40 - £60*

235

A pair of 19th century continental porcelain salts in the form of putti with open baskets, h. 9.5 cm *£40 - £60*

236

A collection of Limoges Peint Main gilt and floral decorated porcelain to include a comport, trinket dishes, bell, box etc, h. 13 cm *£200 - £300*

237

A collection of Limoges Peint Main gilt and floral decorated porcelain items to include trinket boxes, needle cases, card case, scent bottle etc. *£150 - £250*



Lot 238

238

A Sevres porcelain casket decorated with flowers and a couple in 18th century dress. Marked 'Sevres' and 'Chateau Des Tuileries' to base, h. 9.5 cm *£100 - £200*

239

Three late 19th century Belleek lattice work and floral encrusted baskets, one with cover, h. 16 cm A/F *£80 - £120*

240

A continental mirror with ceramic frame, the top with two putti over a plaque of bird on branch above the flower studded frame *£100 - £200*

241

A Grayson Perry plate for the Holburne museum, dia. 21.75 cm *£100 - £200*

242 - 299

Spare Lots

300

An 18th/19th century middle eastern flintlock rifle, the steel stock with engraved decoration and brass inlay, l. 133 cm *£150 - £250*

301

An early 20th century Borough of Hammersmith enamel street sign 'Holberton Gardens N.W.10' 86 cm x 46 cm *£150 - £250*

302

Irene Rochard (1906-1984), a bronzed metal model of seabird on the crest of a wave, mounted on a black marble base. Signed to base, h. 60 cm *£100 - £200*

303

A late 17th/early 18th century violin bearing the label of Joannes Schorn of Salzburg (1690-1716). Together with case, associated paperwork and two bows, one stamped 'Dodd' *£1000 - £2000*

304

An early 20th century articulated wooden doll marked 'Schoenhut Doll Pat Jan 17.11 USA Foreign Countries', l. 42 cm *£80 - £120*

305

A large early 20th century oak serving tray with silver handles. Hallmarked for London 1905, l. 75 cm *£50 - £80*



Lot 303

306

A collection of early 20th century Chinese painted terracotta procession figures, h. 5 cm
£70 - £100

307

An early 20th century Jacques Staunton style boxwood and ebony chess set, several pieces bearing a red crown stamp, king h. 8.5 cm
£100 - £200

308

A WWI military telescope marked 'T.T & H Ltd 1918 No.32741 Tel Sig (Mk IVO Also G.S)', l. 86 cm
£80 - £120

309

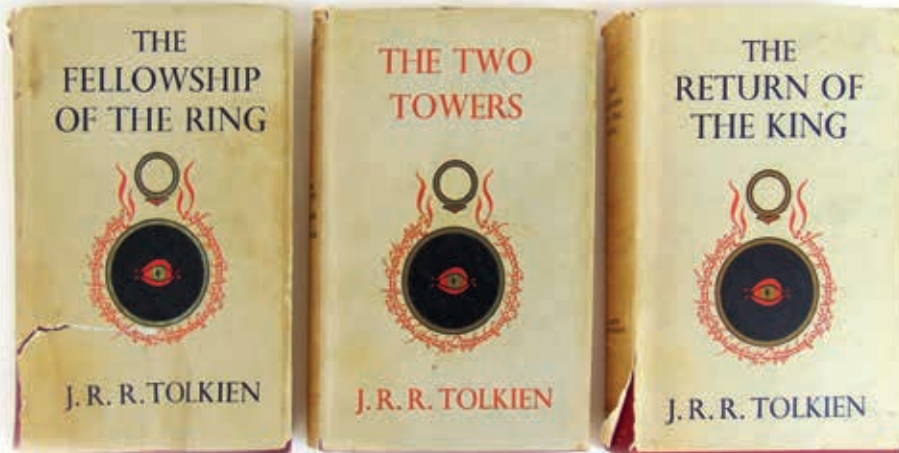
A collection of thirty novelty carved wooden bottle stoppers and similar, many being articulated. With rack
£70 - £100

310

J.R.R Tolkien, The Lord Of The Rings trilogy. 1st Edition, 7th impression of The Fellowship Of The Ring (The Two Towers 5th, Return of the King 4th) George Allen & Unwin Ltd With dust jackets and slip case
£100 - £200

311

W.Ellis, An Authentic Narrative Of A Voyage Performed By Captain Cook and Captain Clerke... Printed for G.Robinson, Pater-nofter Row; J.Sewell, Cornhill; and J.Debrett, Piccadilly 1782
£100 - £200



Lot 310



Lot 312

312

A pair of late 19th century bronze putti, one modelled holding pipes, the other with bird. Mounted on slate bases, h. 28 cm
£150 - £250

313

Two 19th century French chassepot bayonets, blade length 57 cm.
£60 - £80

314

A German model 1898 Mauser bayonet, with part leather scabbard. The blade stamped 'E & F Horster Solingen', blade length 52 cm
£60 - £80

315

A British 1907 pattern bayonet with part leather scabbard. The blade stamped 'Chapman' with various proof marks, blade length 43 cm.
£50 - £80



Lot 323

316

An early 20th century Japanese Arasaki type bayonet with steel scabbard and leather frog, blade length 39.5 cm
£50 - £80

317

A British No.4 MKII spike bayonet together with a Spanish M1941 bayonet and a one other, probably Czech.
£70 - £100



Lot 318

318

A late 19th century American bayonet, the fullered blade marked 'Remington Arms Co. Ilion.N.Y.'. Housed in a part leather scabbard with frog. Blade length 21 cm
£60 - £80

319

A British 1888 pattern Lee Metford bayonet with part leather scabbard. The blade with numerous proof marks, blade length 30.5 cm
£60 - £80

320

A replica WWII Luftwaffe ceremonial dress dagger (missing scabbard) together with a replica WWII German army officers ceremonial dagger
£50 - £100

321

A replica WW2 German SA dagger together with one other WW2 style dagger
£50 - £100

322

An early 19th century British naval officers sword, the straight engraved blade housed in a part leather scabbard, blade length 69 cm A/F
£100 - £200

323

A 19th century Russian percussion rifle being later converted from flintlock. The lock marked and dated 1836, the brass fittings marked and dated 1844. Bore size approx 0.740, l. 148 cm
£300 - £400

324

An early 20th century continental gilt metal bird automaton music box with sliding lever action and repousse type classical decoration, l. 11 cm
£700 - £1000

325

A Japanese Meiji period carved amber type netsuke in the form of an elephant, h. 2.5 cm
£100 - £200



Lot 325



Lot 324

326

A collection of 1950s & 60s autographed entertainment photographs to include: Bing Crosby, Johnny Ray, Bob Hope, Alvin Stardust, Helen Shapiro, David Whitfield and Tex Robertson. Purportedly compiled by Tex Robertson during his time as an entertainer, £80 - £120

327

A military aircraft reconnaissance lens marked '20 in. F6.3 EE189268'. Housed in packing crate with broad arrow mark. £70 - £100



328

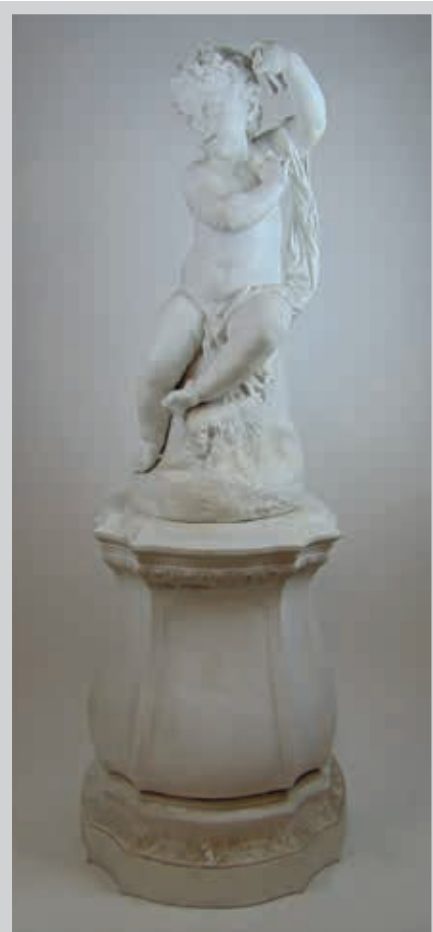
A pair of early 20th century giltwood greyhounds, on silvered bases, h. 75 cm £150 - £250

329

Taxidermy - a 19th century cased study including a stoat, woodpecker, kingfisher, two pheasants etc. set in naturalistic surrounds, h. 62 cm, w. 91 cm £150 - £250

330

A scale model of a steam powered engine powering a sheet metal press, in glass case, h. 45 cm, w. 54 cm, d. 54 cm £100 - £200

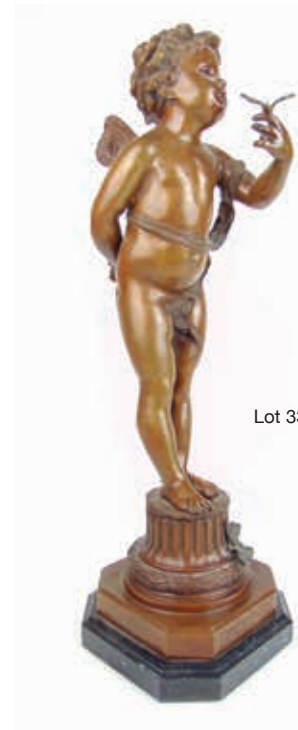


331

A 19th century continental statue of putto playing castanets sat upon a rock on bombe plinth, h. 166 cm £300 - £500

332

A 19th century gilt metal and green velvet picture/photograph frame, 47 cm x 35 cm £50 - £80



Lot 334

333

A reproduction bronze figure of dancing lady, h.34 cm £50 - £80



Lot 335

334

A late 19th century bronze figure of cupid looking at a butterfly, titled 'Envole-toi' on marble base, h.55 cm £120 - £180

335

A 19th century bronze figure of a putto reclining on a wheelbarrow, signed L Gregoire (1840-1890) on a red marble base with gilt brass feet, h. 49 cm, l.65 cm £300 - £500



Lot 329

336

A large pair of Chinese blue ground cloisonné lidded vases with birds amidst foliage decoration, h. 61 cm £400 - £600

337

A 19th century French elaborate display under glass dome, h. 49 cm £80 - £120

338

An early 20th century Edison standard phonograph along with approximately 65 wax cylinders £100 - £200



Lot 338



Lot 339

339

A possible medieval carved stone font, the rim with four masks holding floral swags in their mouths over the body with four masks, purportedly from Ettington Park (the vendors former home) where there is a 13th century church 'Holy Trinity' or 'St Nicolas' which fell into disuse in the late 18th century, h. 64 cm £3000 - £5000



Lot 350

350

Steiff - Teddy 1907 brown 70 (1993 replica), limited edition 03486/5000, with box and certificate £100 - £150

351

Steiff - two boxed teddy bears, Brown Tipped 35 limited edition 00722/3000 and Rose 38 limited edition 02639/3000 both with boxes and certificates £100 - £150

352

Steiff - two boxed bears, Light Brown 50 (1993 replica), limited edition 05561/6000 and British Collectors 1907 replica Teddy Bear, limited edition 00725/2000 with certificates £100 - £150

353

Steiff - Giengen-Teddybear-Set, limited edition 009981/16000, no certificate £50 - £80

354

Steiff - four teddy's including 'Dorma', bride, cat and teddy £30 - £50

355

Steiff - a 1993 British Collectors 1907 replica Teddy Bear dark brown, limited edition 00483/3000 with box and certificate £80 - £120



356

Steiff - a 1995 replica Teddy Bear 1909 Blond 65, limited edition 02535/5000, with box and certificate £80 - £120

357

Steiff - a boxed 'Fritzl und Hein' limited edition 01580/2500 with certificate, £80 - £120

358

Steiff - a boxed 'UK Baby Bears 1989-1993', limited edition 01092/1847 with certificate £100 - £150

359

Charlie Bears - 'Dorian' designed by Isabelle Lee, h. 55 cm £50 - £80

360 - 399

Spare Lots



Lot 336

SOUTHAMS
Sporting Guns & Antique Arms

The Autumn Sales of
Sporting Guns & Antique Arms
15th - 17th September 2022

T: 01234 269 082 E: guns@southamsauction.co.uk

Consignments Invited

www.southamsauction.co.uk

ALL ENQUIRIES

Southams Auctioneers 24 Newnham Street, Bedford, Bedfordshire MK40 3JR

T: +44 (0) 1234 269 082 E: guns@southamsauction.co.uk W: www.southamsauction.co.uk

Silver & Coins



Silver & Plate



Lot 400

400
A large 19th century silver plated centerpiece modelled as a putto with raised dish, standing above a base with shields, weapons and armor, h. 57 cm
£150 - £250

401
A 19th century Elkington silver plated spirit kettle and stand with serpent twist handle and supports, h. 40 cm
£80 - £120

402
A 19th century nautilus shell shaped spoon warmer, h, 15 cm
£30 - £50



403
A Mappin & Webb silver plated and ruby glass preserve pot in the form of a bee, l. 17 cm
£200 - £300

404
A late Victorian leather and silver mounted stationery box with embossed putti design. Hallmarked for London 1901, makers mark for William Comyns, h. 20 cm, l, 30 cm, d. 14 cm
£100 - £200



Lot 405

405
A Victorian silver samovar with part reeded decoration. Hallmarked for Sheffield 1898, makers mark for Atkin Brothers. Approx weight 1383g
£500 - £800



Lot 406

407
A Victorian silver pedestal bowl having part reeded and floral swag decoration. Hallmarked for Birmingham 1898, makers mark for Elkington & Co Ltd. Approx weight 739g, h. 15 cm
£300 - £500

408
A cased set of French white metal serving pieces
£80 - £120

409
A large white metal embossed and pierced fruit bowl marked 'Sterling'. Approx weight 880g, dia. 33 cm
£300 - £500



Lot 409

406
A George IV silver teapot of squat form. Hallmarked for London 1829, makers mark for William Ker Reid. Approx weight 788g
£300 - £500



Lot 407



Lot 410

410
A George V silver hot water jug. Hallmarked for Sheffield 1928, makers mark for Atkin Brothers. Approx weight 583g *£200 - £300*

411
A selection of cased silver flatware to include pistol handled knives, silver cake fork set and a pair of Georgian silver serving spoons. Various hallmarks. Approx weighable silver 210g *£100 - £150*

412
A selection of silver items to include a pair of toast racks, vase and a small trophy. Various hallmarks. Approx weighable silver 144g *£70 - £100*

413
A George V silver comport having a piecrust rim. Hallmarked for Birmingham 1931. Approx weight 306g *£120 - £180*

414
An assortment of silver dressing table items to include mirror, brush, cut glass pots, dish etc. Various hallmarks *£80 - £120*

415
A large assortment of silver and white metal items to include small pouring jugs, bowl, table spoons, cups etc. Various hallmarks. Approx weight 549g *£200 - £300*



Lot 416

416
A late Victorian silver presentation cigar box. Hallmarked for London 1901, makers mark William Comyns, l. 14 cm *£50 - £80*

417
A selection of silver tableware to include a three piece cruet set, sauce boat and two bon-bon dishes. Various hallmarks. Approx weight 503g *£200 - £300*

418
A set of George V silver teaspoons together with a set of Edwardian silver handled knives. Various hallmarks. Approx weighable silver 140g *£50 - £80*

419
A small silver cigar box of conventional form. Hallmarked for Birmingham 1921 (possibly), l. 8 cm *£30 - £40*

420
A cased set of twelve Victorian silver teaspoons. Hallmarked for Sheffield 1896, makers mark for Allen & Darwin. Approx weight 128g *£50 - £80*

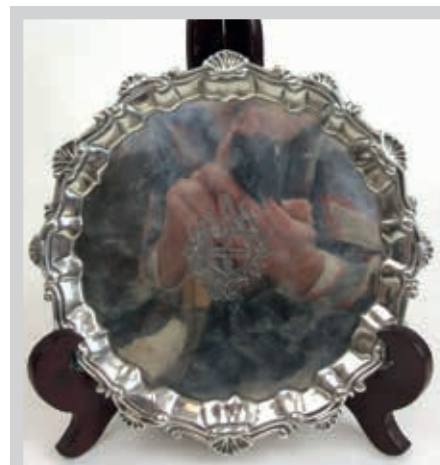
421
A white metal and pink guilloche enamel cigarette case marked 'sterling'. Approx weight 131g *£70 - £100*



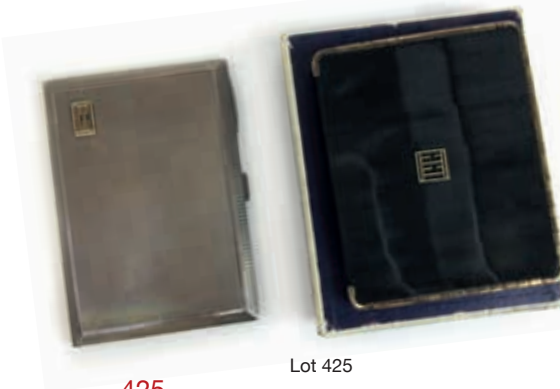
Lot 422

422
A cased George V five piece silver cruet set by Asprey. Hallmarked for London 1925, makers mark for Asprey & Co. Approx weight 160g *£100 - £150*

423
A George V silver cigarette case. Hallmarked for Birmingham 1918. Approx weight 220g *£100 - £150*



424
A George II silver card tray with heraldic engraving to center and scallop design to rim. Hallmarked for London 1755, makers mark for William Peaston. Approx weight 365g *£300 - £400*



Lot 425

425
A George V silver cigarette case with engine turned decoration together with a fabric and silver mounted purse by Asprey. Various hallmarks. Approx weighable silver 202g *£100 - £150*

426
A small silver card tray together with a silver wine bottle coaster and a pin dish. Various hallmarks. Approx weighable silver 222g *£100 - £150*

427
A cased George V silver three piece cruet set. Hallmarked for Birmingham 1930, makers mark for Walker and Hall. *£60 - £80*

428
A silver cigar box with engine turned lid and bracket feet. Hallmarks rubbed, l. 14.5 cm *£60 - £80*



429
A large collection of Victorian and later putto design mainly dressing table items to include mirrors, trinket boxes, brushes, matchbox holder, bottle etc. Various hallmarks. *£400 - £600*



Lot 430

430
A pair of George IV silver pedestal salts of reeded form. Hallmarked for London 1827, makers mark for Rebecca Emes & Edward Barnard I. Approx weight 260g, h. 5.5 cm
£120 - £180

431
A collection of silver and eastern white metal items to include bowl, pot, cruet, menu holder etc.
£60 - £80

432
An Elizabeth II silver four branch candelabra together with a pair of George V silver candlesticks. Candelabra weight approx 466g, h. 18 cm
£200 - £300

433
A George II silver salver having hoof feet and heraldic engraving to center. Hallmarked for London 1736, makers mark for Robert Abercromby. Approx weight 356g
£200 - £300

434
A cased George V silver open salt set. Hallmarked for London 1911, makers mark for The Goldsmiths & Silversmiths Company. Approx weight 326g
£140 - £180



Lot 434



Lot 435



435
A George V silver coffee pot of small proportions together with a Edwardian silver cream jug and sugar bowl pair. Various hallmarks. Approx weight 548g
£200 - £300

436
An assortment of silver items to include an inkstand, trophy, mug, small rose bowl etc. Various hallmarks. Approx weight 575g
£220 - £280

437
A cased set of four Edwardian silver heart shaped menu holders. Hallmarked for Chester 1904, makers mark for Samspon Mordan & Co. Approx weight 156g
£120 - £180

438
An assortment of silver items to include napkin rings, knife rests, pepper pot, forks etc. Various hallmarks. Weighable silver approx 460g
£160 - £200



Lot 437

441
A pair of George V silver sauce boats of conventional form. Hallmarked for London 1925 & 1929, makers mark for Adie Brothers Ltd. Approx weight 365g
£140 - £180

442
A George III silver pierced sugar basket with blue glass liner together with a George III silver cream jug. Various hallmarks. Approx weight 150g
£120 - £180

443
A set of four Edwardian open salts. Hallmarked for Birmingham 1909, makers mark for R H Thornton. Approx weight 188g
£70 - £100



Lot 439

439
An Edwardian silver teapot with part reeded body and bracket feet. Hallmarked for London 1904. Approx weight 557g
£200 - £300

440
A late Victorian silver hot water pot with embossed decoration. Hallmarked for London 1900, maker mark for Thomas Bradbury & Sons. Approx weight 441g
£160 - £220



Lot 440

444

A pair of Victorian silver pierced bon-bon dishes together with a pair of scallop butter dishes and a silver leaf shaped pin tray. Various hallmarks. Approx weight 266g *£140 - £180*

445

A selection of silver items to include a Victorian pepper pot, a sifting spoon, two silver vesta cases and one plated vesta case. Various hallmarks. Approx weight 166g *£70 - £100*



446

A Victorian novelty silver vinaigrette/scent bottle in the form of a horn. Hallmarked for London 1874, makers mark for Sampson Mordan & Co, l. 8 cm *£150 - £200*

447

An early 20th century silver plated chatelaine together with two chatelaine pin cushions, a thimble holder, a miniature knife and pair of scissors. *£50 - £80*

448

A Victorian silver scissor holder together with a George V silver purse/organizer. Various hallmarks. Approx weight 133g *£60 - £80*

449

A collection of miniature silver and white metal items to include miniature furniture, swans, enamel and cut glass shakers, bookmark, pin tray etc. *£80 - £120*



Lot 456



450

A 22ct gold stamp replica commemorating the marriage of HRH The Princess Anne to Captain Mark Phillips together with a silver example. Weight of 22ct stamp approx 26.3g *£900 - £1100*

451

A John Pinches 100 Greatest Cars Silver Miniature Collection *£100 - £150*

455

A collection of mainly Victorian and later half-crowns to include silver examples. *£250 - £350*

456

A Queen Victoria young head full sovereign dated 1881 *£280 - £350*

457

An Edward VII full sovereign dated 1910 *£280 - £350*

458

A Queen Victoria full sovereign dated 1893 *£280 - £350*

459

A George V full sovereign dated 1911 *£280 - £350*

460

A George V full sovereign dated 1910 *£280 - £350*

461

United Kingdom coin proof sets 1997-2000 (4) with outer boxes and COAs *£60 - £80*

462

United Kingdom coin proof sets 2001-2004 (4) with outer boxes and COAs *£60 - £80*

463

United Kingdom coin proof sets 2005, 2006, 2007, 2008 and 2010 (5) with outer boxes and COAs *£100 - £150*

464

A 2009 United Kingdom coin proof set to include Kew Gardens fifty pence *£280 - £350*

465

A 2011 United Kingdom coin proof set together with a 2012 United Kingdom coin proof set *£80 - £120*

466

A 2013 United Kingdom coin proof set *£80 - £120*

467

A 2014 United Kingdom coin proof set *£80 - £120*

468

A 2015 United Kingdom Collector Edition coin proof set *£80 - £120*

469

A 2016 United Kingdom Collector Edition coin proof set *£100 - £150*

470

A 2017 United Kingdom Collector Edition coin proof set *£80 - £120*

471

A 2018 United Kingdom coin proof set *£80 - £120*

472

A 2019 United Kingdom coin proof set *£100 - £150*

473 - 499

Spare Lots



Lot 461



Antique Furniture & Collectors' Items & Jewellery

TO BE SOLD BY AUCTION

Thursday 29th September 2022

Commencing at 11.00am

Viewing: Saturday prior 10.00am – 2.00pm, Tuesday prior 9.00am – 5.00pm

Wednesday prior 9.00am – 7.00pm, morning of sale from 9am



LOCKE & ENGLAND

AUCTIONEERS & VALUERS

Leamington Auction Centre

12 Guy St, Leamington Spa, CV32 4RT

info@leauction.co.uk 01926 889100

www.leauction.co.uk



*Jewellery
& Watches*

Jewellery & Watches

500

An 18ct gold and five stone diamond fine, the old cut stones in a channel setting. Approx weight 6.7g. Size M £250 - £350



Lot 500

501

A 9ct gold, ruby and diamond dress ring together with a 9ct gold and CZ ring and one other yellow metal ring. Approx weight 5.4g £70 - £100



Lot 502

502

An 18ct gold and pear cut diamond solitaire ring, the stone approximately 0.5ct. Approx weight 2.5g. Size J. £250 - £350



Lot 503

503

A yellow metal five stone diamond ring marked '18ct', the stones mounted in an illusion setting. Approx weight 2.9g. Size O £80 - £120

504

A late 19th/early 20th century 18ct gold seal ring. Approx weight 3.5g. Size J £100 - £150



Lot 505

505

A 9ct gold and amethyst dress ring, the cabochon stone in a modernist design mount. Approx weight 4.8g. Size N £60 - £80



Lot 513

506

A 9ct gold opal and purple stone dress ring together with one other yellow metal ring marked '10k'. Approx weight 3.7g £50 - £80

507

An 18ct gold and diamond gypsy style ring together with a 22ct gold wedding band. Approx weights 4.2g & 2.4g £200 - £300

508

An 18ct gold and diamond crossover ring together with a yellow metal and diamond three stone ring and a yellow metal, sapphire and diamond cluster ring. Approx weight 7.4g £200 - £300

509

A group of five 9ct gold and yellow metal rings to include a diamond solitaire ring, wedding band, eternity rings etc. Approx weight 10.4g £140 - £180

510

An 18ct gold, diamond and sapphire cluster ring together with a similar 9ct ring. Approx weights 2.7g & 1.5g £100 - £200

511

An early 20th century 18ct gold and diamond ring, the five old cut stones in a boat shaped setting. Central stone approx 0.15ct. Approx weight 2.7g. Size O 1/2 £80 - £120



Lot 511

512

Three 9ct gold dress rings together with an unmarked double ring. Approx weight 7.6g £100 - £150

513

An early 20th century yellow metal and diamond cluster ring. The eight old cut stones totaling approximately 1.69ct. Approx weight 3.9g. Size K £600 - £800



Lot 514

514

A 9ct gold opal and ruby ring, the three opals interspaced with four rubies. Approx weight 3.2g. Size L £60 - £80

515

A yellow metal emerald and diamond cluster ring, the three square cut emeralds surrounded by eighteen round cut diamonds. Approx weight 3.9g. Size K 1/2 £300 - £400



Lot 515

516

A 22ct gold wedding band. Approx weight 3.6g. Size M £120 - £160

517

A yellow and white metal ruby set ring of stylized flower form. Marked '18k Silver'. Size M £80 - £120



Lot 518

518

An 18ct gold and diamond ring, the three round cut stones in a crossover setting. Approx weight 4.1g. Size L 1/2 £250 - £350

519

An 18ct gold and diamond cluster pendant on a 9ct gold chain. Total carat weight approximately 0.4ct, Approx weight 3.3g £120 - £180

520

An assortment of 9ct gold and yellow metal jewellery to include a cross, seed pearl brooch etc. Approx weight 8.2g £100 - £150

521

A 9ct gold herringbone link neck chain together with a matching bracelet. Approx weight 5g A/F £70 - £100

522

An early 20th century belcher link chain marked '15'. Approx weight 8.7g £180 - £250

523

A yellow metal telescopic fountain pen marked '14ct'. Approx gross weight 18g £120 - £180

524

A 9ct gold beaded link neck chain together with a similar bracelet and a 9ct gold rope twist chain. Approx weight 38.3g £500 - £800



Lot 523

Lot 524



Lot 525

525

An early 20th century 9ct rose gold buckle bangle together with a 9ct rose gold Royal Engineers sweetheart locket. Approx weight 17.2g

£220 - £280

526

An early 20th century 15ct rose gold bangle. Approx weight 9.6g

£220 - £280

527

An assortment of 9ct gold and yellow metal jewellery to include earrings, brooch, rings etc. Together with a locket marked '9ct BK&ft' Approx weight 16g

£200 - £300

528

A George V half sovereign dated 1914 in a yellow metal mount on base metal chain. Approx weight 6.2g

£160 - £200

529

A late 19th/early 20th century yellow metal star link chain. Approx length 38 cm

£70 - £100

530

A yellow and white metal watch chain with elongated links. Approx weight 12.5g

£180 - £250



Lot 528

531

A yellow metal mounted carved shell cameo brooch/pendant. The mount marked 'K14'. Approx weight 8.8g

£60 - £80

532

A late 19th/early 20th century seed pearl and pale blue stone bar brooch in the form of an insect together one other seed pearl brooch. Approx weight 6.6g

£100 - £150



Lot 533

533

A late 19th/early 20th century yellow metal, enamel and pearl crescent brooch modelled as a snake devouring an egg. Approx weight 5.9g, l. 4.8 cm

£300 - £500



Lot 534

534

A George V half sovereign brooch dated 1912. Approx weight 4.8g

£140 - £180

535

A 9ct gold horse head pendant suspended from a 9ct gold curb chain together with a 9ct gold T bar neck chain. Approx weight 29.2g

£400 - £600



Lot 536



Lot 538

538

A 9ct gold articulated dolphin pendant on a 9ct gold curb link chain. Approx weight 22g

£300 - £500

539

A 9ct gold engraved bangle. Approx weight 12.1g

£160 - £220



540

A 19th century nine strand seed pearl necklace having a yellow metal and pearl set clasp with hair panel, l. 35 cm

£80 - £120

541

A 19th century rose metal fancy link bracelet with 9ct gold heart padlock clasp

£300 - £500



Lot 542



Lot 541

536

A 9ct gold three bar gate link bracelet. Approx weight 16.8g

£220 - £280

537

Three 9ct gold bracelets together with a 9ct gold rugby ball pendant. Approx weight 27.9g

£400 - £600

542

An 18ct gold diamond and emerald brooch in the form of a flower with ribbon. Approx weight 10.4g

£350 - £450

543

An assortment of silver jewellery to include a bangle, rope twist chains, ring etc. Approx weight 79.2g

£40 - £60

544

A 1903 Edward VII half sovereign mounted in a 9ct gold pendant mount on 9ct gold belcher chain. Approx weight 16.4g

£300 - £400

545

A pair of 9ct gold creole earrings together with a 9ct gold hanger brooch and a yellow metal, blue stone and seed pearl brooch marked '9ct'. Approx weight 6.5g

£70 - £100



Lot 546

546

A large 9ct gold, CZ and ruby set articulated rag doll pendant. Approx weight 22g, l. 7 cm

£300 - £500

547

A pair of 9ct gold mounted South African 1 Rand coin cufflinks. Approx weight 17.4g

£400 - £600



Lot 547



548
A pair of 9ct gold and lapis lazuli cufflinks.
Approx weight 8.8g *£50 - £80*



555
A gentleman's Omega Seamaster Professional 300m/1000ft. Circa 1998. Boxed with papers. Apparently new old stock, still with original packaging. 36mm excluding crown *£1000 - £1500*



549
Three 9ct gold part engine turned cufflinks.
Approx weight 8.2g *£100 - £200*

550
A yellow metal and diamond solitaire stick pin, the round brilliant cut stone approximately 0.3ct *£300 - £400*

551
A 9ct rose gold double albert chain. Approx weight 37.1g *£500 - £800*

552
A yellow metal, jade and diamond pendant marked '22k'. Approx weight 1.4g *£100 - £150*

553
A 14ct gold 'V' link bracelet. Approx weight 18.8g *£400 - £600*

554
A 9ct gold, diamond and peridot ring together with matching earrings. Approx weight 4.9g *£100 - £150*



556
A gentleman's 9ct gold Garrard quartz wristwatch. Approx weight 57g *£400 - £600*

Lot 556



560
A ladies 9ct gold Rotary mechanical wristwatch together with a yellow metal Favre Leuba mechanical wristwatch *£160 - £220*

561
An early 20th century ladies yellow metal wristwatch *£40 - £60*

562
A yellow metal half hunter pocket watch marked '14k'. Approx weight 86g. Together with stand *£400 - £600*

563
A gentleman's stainless steel Universal Geneve manual winding wristwatch, the dial with baton markers and seconds sub-dial. *£80 - £120*

564
A gentleman's yellow metal Astral mechanical wristwatch with date aperture *£120 - £180*

565
A gentleman's yellow metal Trebex mechanical wristwatch, the dial with Arabic numerals. *£80 - £120*

566
A gentleman's or boy's Record yellow metal mechanical wristwatch *£60 - £80*

557
An 18ct gold half hunter pocket watch, the face with Roman numerals and seconds sub dial. Approx weight 109g *£600 - £800*

558
A gentleman's yellow metal Accurist mechanical wristwatch on an expanding strap *£80 - £120*

559
A ladies yellow metal Jaeger-Lecoultre mechanical wristwatch marked '18kt'. Approx weight 26g *£500 - £800*



567
A ladies 9ct gold Bueche Girod mechanical wristwatch. Approx weight 25g *£200 - £300*

568
Three ladies yellow metal wristwatches *£150 - £250*



Lot 559

Lot 567

569

A ladies yellow metal V.Bueche Girod wristwatch with segmented dial and baton markers. £200 - £300

570

A ladies 9ct white gold Certina mechanical wristwatch with box. Approx weight 16g £100 - £150

571

A gentleman's or boy's yellow metal Rotary mechanical wristwatch with fitted box. £70 - £100

572

A ladies 9ct gold Omega mechanical watch. Approx weight 36g £350 - £450

573

A ladies 9ct gold Garrard mechanical wristwatch. Approx weight 17g A/F £150 - £250

574

A ladies yellow metal wristwatch on 9ct gold strap together with one other ladies yellow metal watch. £250 - £350

575

A Victorian 18ct gold fob watch with yellow metal dial. Approx weight 50g £400 - £600

576

A late Victorian silver pocket watch, the dial signed 'J.G Graves The Express English Lever'. Together with trombone link silver albert chain. £70 - £100



Lot 569

577

A Victorian silver fusee pocket watch, the dial signed 'J. & a. Stadler Salford'. Together with a silver albert chain. £70 - £100

578

A George III silver pair cased verge fusee pocket watch, the movement signed 'FN Retford London'. A/F £70 - £100

579

A yellow metal fob watch. Approx weight 39g. A/F £200 - £300

580

A collection of four silver pocket watches (and one thimble) to include a pair cased verge fusee example. A/F £150 - £200



Lot 572